

RETAIL SPACE AVAILABLE FOR LEASE

# SHOPS ON OVERLAND

Located on Overland Road in front of the Wal-Mart Super Center in Boise



## LOCATION

## PROFILE

- To-be-built retail space available for lease
- Space Available: 15,000 SF
- Lease Rate: \$25.80 NNN
- Lease Term: 5-10 years
- Anchored by Wal-Mart and Lowe's Home Improvement
- Contact agent for further details



## CONTACT

**Mike Christensen**  
 208-472-2866  
 mike.christensen@colliers.com

**Brook Blakeslee**  
 208-472-2835  
 brook.blakeslee@colliers.com

**COLLIERS**  
INTERNATIONAL

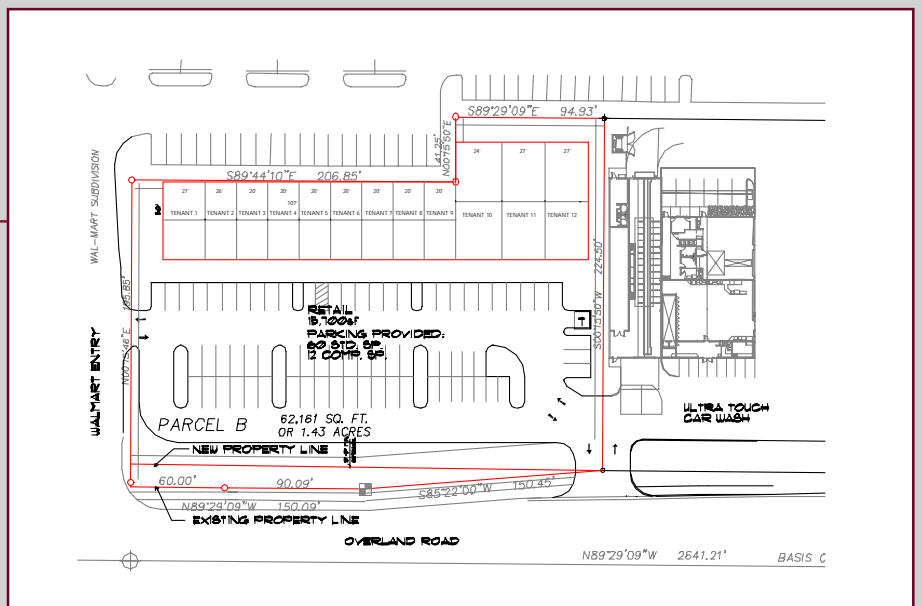
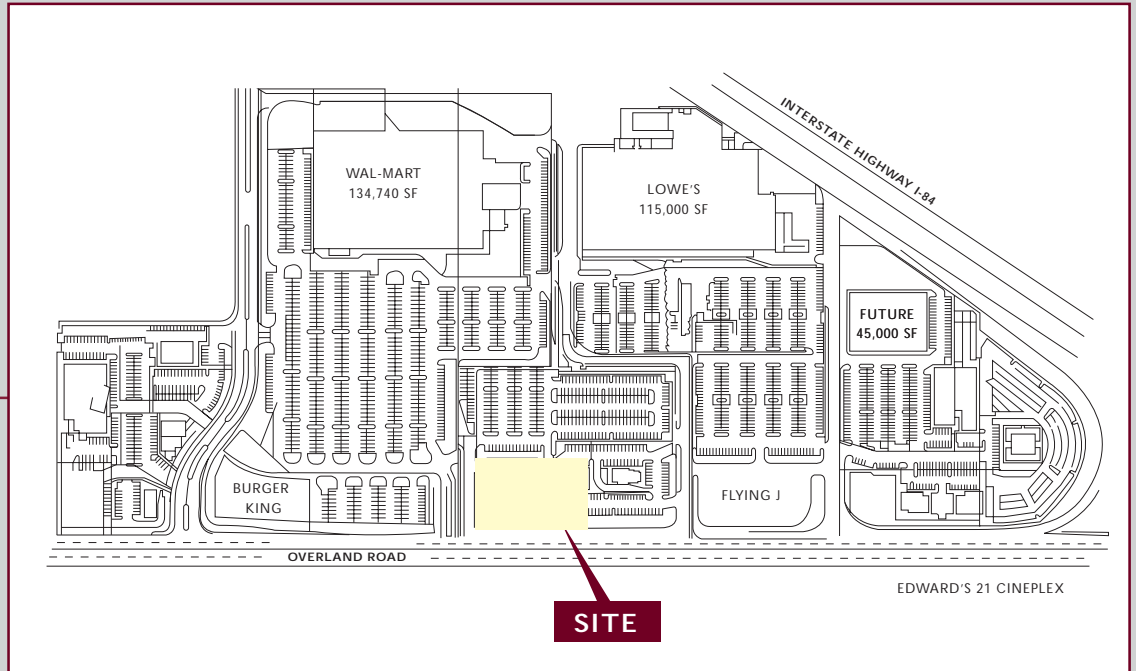
COLLIERS INTERNATIONAL  
 475 South Capitol Blvd., #300  
 Boise, Idaho 83702  
 Tel. 208.345.9000  
 www.colliersidaho.com

RETAIL SPACE AVAILABLE FOR LEASE

# SHOPS ON OVERLAND

Located on Overland Road in front of the Wal-Mart Super Center in Boise

SITE PLANS



COLLIERS  
INTERNATIONAL

COLLIERS INTERNATIONAL  
475 South Capitol Blvd., #300  
Boise, Idaho 83702  
Tel. 208.345.9000  
www.colliersidaho.com

Mike Christensen  
208-472-2866  
mike.christensen@colliers.com

Brook Blakeslee  
208-472-2835  
brook.blakeslee@colliers.com