

# NEC

## MAJOR / SHOP SPACE FOR LEASE / PADS FOR SALE

# Reems Road and Waddell Road Surprise, Arizona

### SITE FEATURES:

- ±30,000 SF Major
- ±16,000 SF Retail Shop Space
- ±4,750 SF C-Store Pad
- ±3,000 SF Fast Food Pad
- ±3,000 SF Fast Food Pad
- ±4,200 SF Bank Pad

Exclusively represented by:

### BOB PEARLSTEIN

First Vice President

602.735.5636

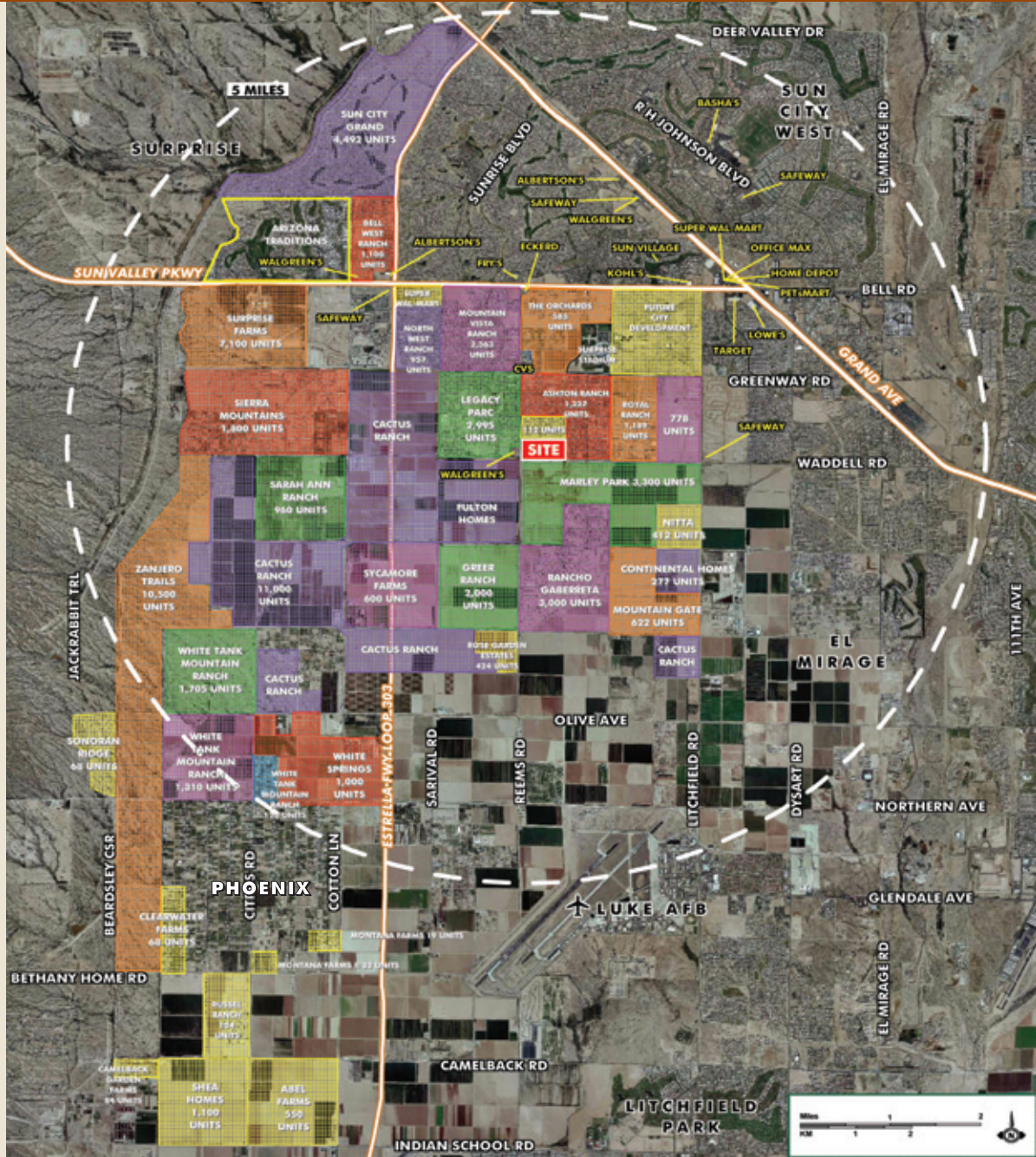
robert.pearlstein@cbre.com

### MAX BIPPUS

Associate

602.735.5518

max.bippus@cbre.com



## BOOMING RESIDENTIAL GROWTH

# CBRE

CB RICHARD ELLIS

2415 East Camelback Road, Phoenix, Arizona 85016-4290 • T 602.735.5555 • F 602.735.5655 • www.cbre.com/phoenix

MAJOR / SHOP SPACE FOR LEASE / PADS FOR SALE

NEC

Reems Road and Waddell Road  
Surprise, Arizona

Exclusively represented by:

**BOB PEARLSTEIN**

First Vice President

602.735.5636

robert.pearlstein@cbre.com

**MAX BIPPUS**

Associate

602.735.5518

max.bippus@cbre.com



NORTH  
ALL DIMENSIONS ARE APPROXIMATE  
NOT TO SCALE

**DEMOGRAPHIC SUMMARY:**

3 MILE      5 MILE      7 MILE

2003 Estimated Population	17,205	60,723	120,685
2008 Projected Population	22,267	72,933	140,193
2003 Household Income	\$63,789	\$56,014	\$54,891

©2004 CB Richard Ellis, Inc. We obtained the information above from sources we believe to be reliable. However, we have not verified its accuracy and make no guarantee, warranty or representation about it. It is submitted subject to the possibility of errors, omissions, change of price, rental or other conditions, prior sale, lease or financing, or withdrawal without notice. We include projections, opinions, assumptions or estimates for example only, and they may not represent current or future performance of the property. You and your tax and legal advisors should conduct your own investigation of the property and transaction. BP5351\_07/04

**CBRE**  
CB RICHARD ELLIS

2415 East Camelback Road, Phoenix, Arizona 85016-4290 • T 602.735.5555 • F 602.735.5655 • [www.cbre.com/phoenix](http://www.cbre.com/phoenix)