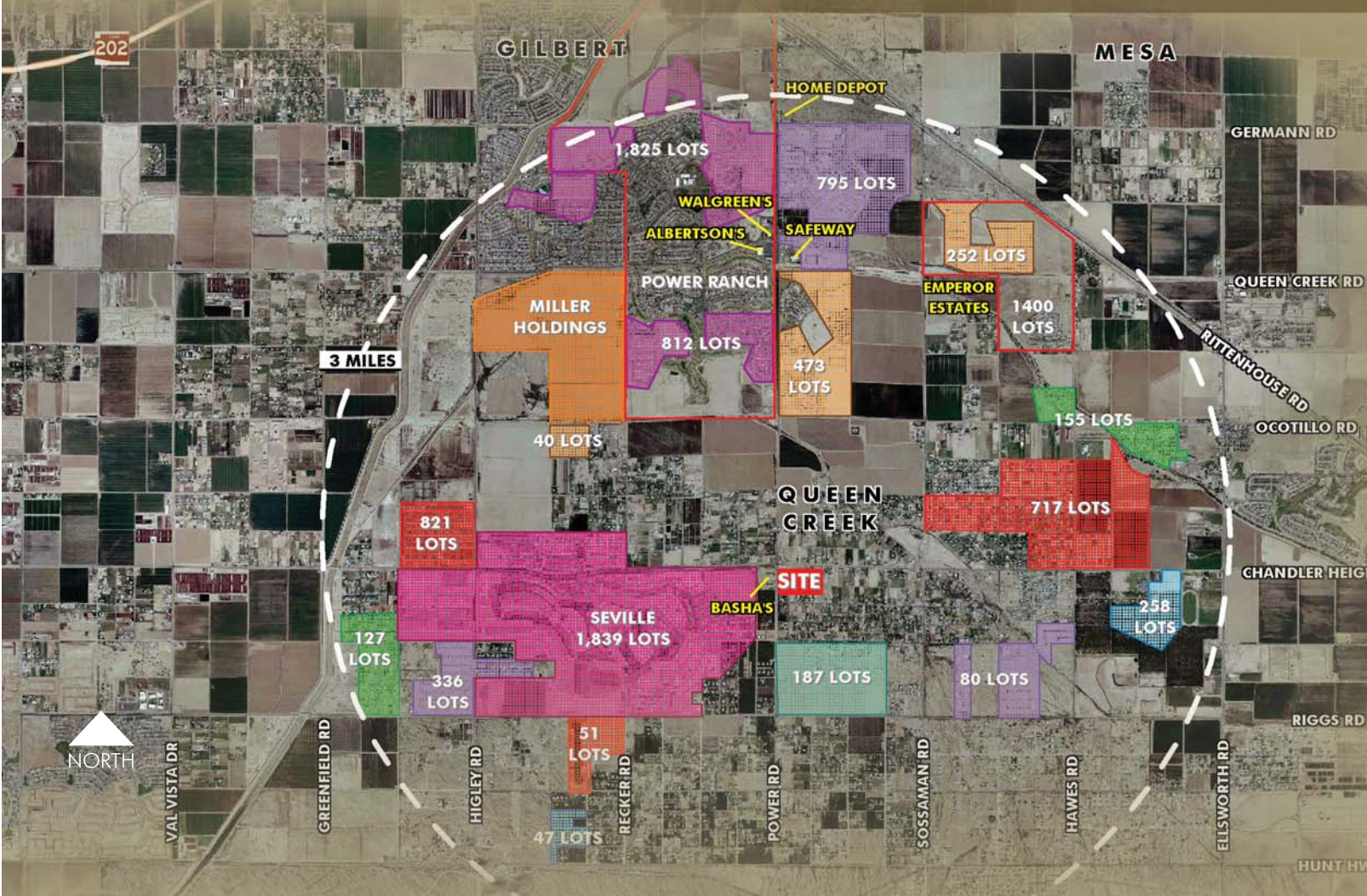


# SEC POWER ROAD & CHANDLER HEIGHTS ROAD

QUEEN CREEK, ARIZONA



## AVAILABLE SPACE

- Retail Shops: ±20,000 SF
- Retail Pad: ±4,800 SF
- Retail Pad: ±7,200 SF
- Bank Pad: ±3,500 SF

## AREA AMENITIES

- Across from Basha's (Now Open)
- Booming Residential Growth
- Over 31,000 New and Future Lots Planned in 5-mile Radius

Exclusively represented by:

### BOB PEARLSTEIN

First Vice President  
602.735.1762  
robert.pearlstein@cbre.com  
www.cbre.com/robert.pearlstein

### MAX BIPPUS

Senior Associate  
602.735.5518  
max.bippus@cbre.com  
www.cbre.com/max.bippus

DEVELOPED BY:



# SEC POWER ROAD AND CHANDLER HEIGHTS ROAD

Major / Shop Space and Pad for Lease

## NEW RESIDENTIAL DEVELOPMENT

(5-mile radius)

New Development:	16,757 lots
Future Development:	14,495 lots
<hr/> Total lots:	<hr/> 31,252 lots
Average Person Per HH:	3.43
Total new and future residents:	107,194

## DEMOGRAPHIC SUMMARY

### 2004 Estimated Population

1 mile:	1,696
3 mile:	11,052
5 mile:	23,883

### 2009 Projected Population

1 mile:	2,232
3 mile:	15,220
5 mile:	34,478

### 2004 Average Household Income

1 mile:	\$84,359
3 mile:	\$81,232
5 mile:	\$82,074

Exclusively represented by:

### BOB PEARLSTEIN

First Vice President  
602.735.1762  
robert.pearlstein@cbre.com  
www.cbre.com/robert.pearlstein

### MAX BIPPUS

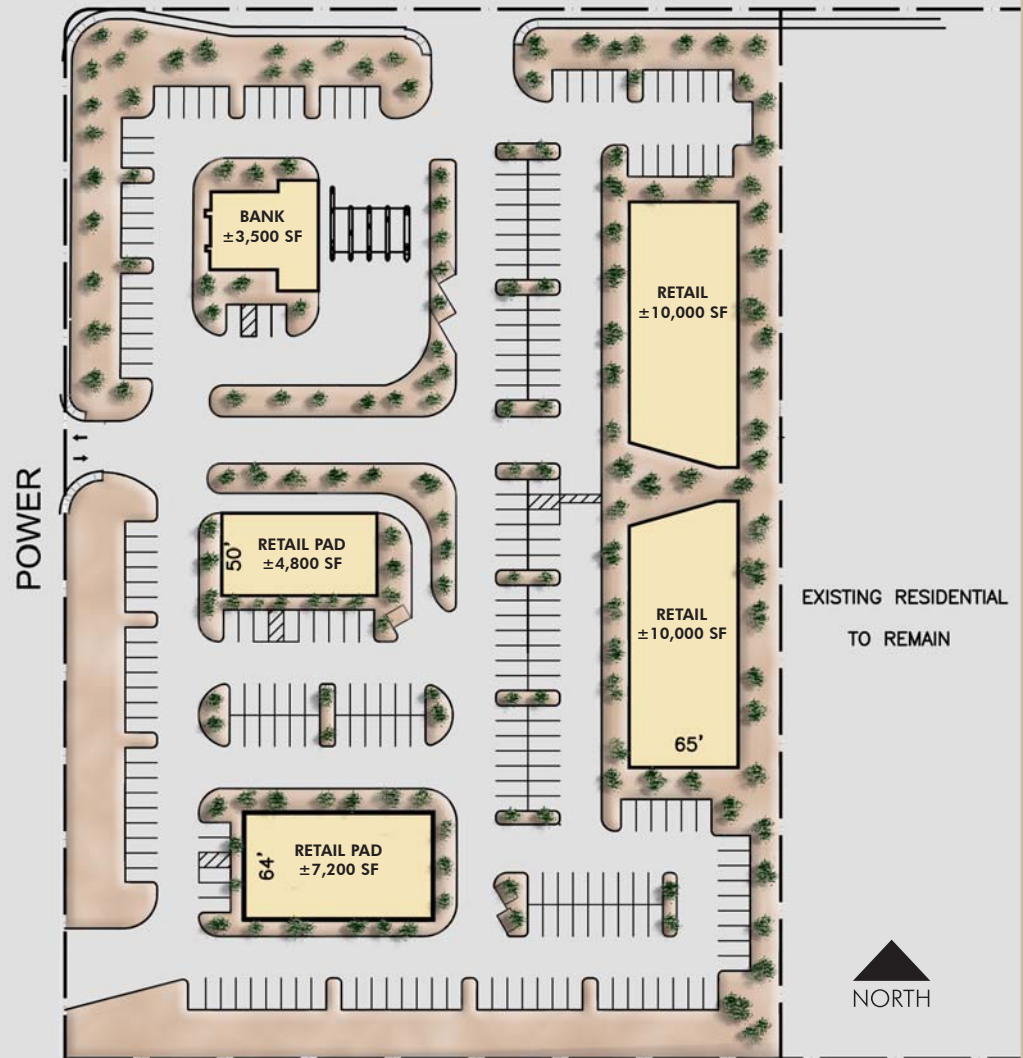
Senior Associate  
602.735.5518  
max.bippus@cbre.com  
www.cbre.com/max.bippus

DEVELOPED BY:



www.cbre.com/phoenix

## CHANDLER HEIGHTS



SITE IS NOT TO SCALE AND ALL DIMENSIONS ARE APPROXIMATE

©2005 CB Richard Ellis, Inc. We obtained the information above from sources we believe to be reliable. However, we have not verified its accuracy and make no guarantee, warranty or representation about it. It is submitted subject to the possibility of errors, omissions, change of price, rental or other conditions, prior sale, lease or financing, or withdrawal without notice. We include projections, opinions, assumptions or estimates for example only, and they may not represent current or future performance of the property. You and your tax and legal advisors should conduct your own investigation of the property and transaction. BP5349 04/05